

# Annual Report

# 2023

2023 began for the Washington Ozaukee Public Health Department staff with a strategic planning session and a new outlook on how we aim to provide service delivery to the people of Washington and Ozaukee Counties. The new mission of our department is to provide community assessment, education and collaborative health interventions for all who live, work and play in our counties. In conjunction with this new mission, public health staff are dedicated to our main purpose of advocating and serving by promoting the health and safety of the public.

This report is structured to address the 10 Essential Public Health Services, which provide a framework for public health. These essential services guide our daily work and remind us of our duty to prevent illness, promote health, and protect our community, and are incorporated into every program and service we provide. Within the breakdown of these essential services, we have also chosen to highlight some examples of the many ways in which our department has grown this past year, in alignment with our departmental values of integrity, resourcefulness, collaboration, and servant leadership.

We recognize that we cannot do this work alone. We deeply appreciate each of our community partners who continue to work with us to sustain and improve the health of Washington County and Ozaukee County residents.

Thank you for supporting public health in 2023.



Kim Buechler  
Director/Health Officer

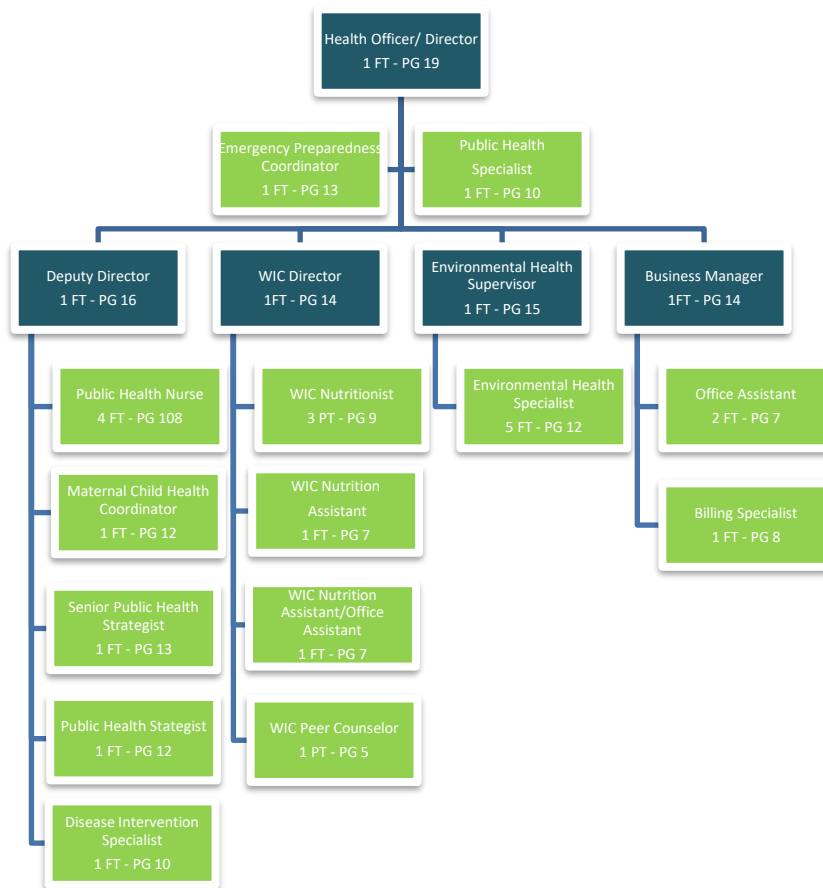
# Washington Ozaukee Public Health Department

## Annual Report 2023

### Table of Contents

<b>Organization Chart</b> .....	<b>3</b>
<b>Washington Ozaukee Joint Board of Health</b> .....	<b>3</b>
<b>Washington Ozaukee Public Health Department (WOPHD)</b> .....	<b>4</b>
<b>Essential Service 1: Assess and Monitor Population Health</b> .....	<b>5</b>
<b>Essential Service 2: Investigate, Diagnose and Address Health Problems</b> .....	<b>5</b>
<b>Essential Service 3: Communicate Effectively</b> .....	<b>10</b>
<b>Essential Service 4: Stengthen, Support and Mobilize</b> .....	<b>11</b>
<b>Essential Service 5: Create, Champion and Implement</b> .....	<b>144</b>
<b>Essential Service 6: Utilize Legal and Regulatory Actions</b> .....	<b>144</b>
<b>Essential Service 7: Assure an Effective System</b> .....	<b>155</b>
<b>Essential Service 8: Build and Support a Skilled Workforce</b> .....	<b>17</b>
<b>Essential Service 9: Improve and Innovate Public Health Functions</b> .....	<b>188</b>
<b>Essential Service 10: Build and Maintain Organizational Structure</b> .....	<b>199</b>
<b>Appendices</b> .....	<b>20</b>
<b>Appendix A: Washington Ozaukee Community Health Improvement Plan 2022-2025</b> .....	<b>20</b>
<b>Appendix B: DHS Award Letter</b> .....	<b>20</b>

## Organization Chart



## Washington Ozaukee Joint Board of Health

### Washington County Representatives

Jodi Schulteis, County Board Member  
 Jeffrey Schleif, County Board Chair  
 Linda Gurath, County Board Member  
 Doreen Buntrock, Citizen Member  
 Travis Dowden, Citizen Member

### Ozaukee County Representatives

James Krane, County Board Member  
 Donald Clark, County Board Member  
 Nitish Bangalore, Citizen Member  
 Doug McManus, Citizen Member

**Dr. Steven Zils, Aurora, Medical Advisor**

# Washington Ozaukee Public Health Department (WOPHD)

## Purpose & Mission

**Purpose:** To advocate and serve by promoting the health and safety of the public.

**Mission:** Provide community assessment, education, and collaborative health interventions for all who live, work, and play in our counties.

**Philosophy:** The values that we hold in fulfilling our purpose and carrying out our mission include:

- **Integrity:** Demonstrating transparency, honesty and respect.
- **Resourcefulness:** Providing inclusive, responsive, proactive and equitable services that reflect the needs of the community.
- **Collaboration:** Partnering with organizations to accomplish shared goals and initiatives through data and evidence-based practices.
- **Servant Leadership:** Leading with empathy and compassion for our community.

## THE 10 ESSENTIAL PUBLIC HEALTH SERVICES

To protect and promote the health of all people in all communities

The 10 Essential Public Health Services provide a framework for public health to protect and promote the health of all people in all communities. To achieve optimal health for all, the Essential Public Health Services actively promote policies, systems, and services that enable good health and seek to remove obstacles and systemic and structural barriers, such as poverty, racism, gender discrimination, and other forms of oppression, that have resulted in health inequities. Everyone should have a fair and just opportunity to achieve good health and well-being.

### Assessment

- 1 Assess and monitor population health status, factors that influence health, and community needs and assets
- 2 Investigate, diagnose, and address health problems and hazards affecting the population

### Policy Development

- 3 Communicate effectively to inform and educate people about health, factors that influence it, and how to improve it
- 4 Strengthen, support, and mobilize communities and partnerships to improve health
- 5 Create, champion, and implement policies, plans, and laws that impact health
- 6 Utilize legal and regulatory actions designed to improve and protect the public's health

### Assurance

- 7 Assure an effective system that enables equitable access to the individual services and care needed to be healthy
- 8 Build and support a diverse and skilled public health workforce
- 9 Improve and innovate public health functions through ongoing evaluation, research and continuous quality improvement
- 10 Build and maintain a strong organizational infrastructure for public health

## Essential Service 1

### Assess and monitor population health status, factors that influence health, and community needs and assets

Essential Service 1 includes assessment of the health status of the community through formal and informal needs assessments and data analysis. The Washington Ozaukee Public Health Department collaborates with a broad group of community partners to address our health needs. Community health improvement planning and leading health indicator data guide our health focus areas.

### Washington and Ozaukee Health Status

County Health Rankings collect data for every county in the United States and provide a state ranking. In 2023, Ozaukee was ranked the healthiest county in Wisconsin and Washington was ranked the 5<sup>th</sup> healthiest.

#### 2023 Outcomes:

- Despite these high rankings, health data of concern include the percentage of adults who smoke, are obese, drink excessively (defined as adults who report binge or heavy drinking in the past 30 days) and the number of self-reported poor mental health days. The number of poor mental health days has continued to increase from 2022 to 2023, which follows a statewide trend.

Health Indicator	Washington	Ozaukee	Wisconsin
Adult Obesity	30%	31%	33%
Adult Smoking	15%	13%	16%
Excessive Drinking	26%	29%	26%
Poor Mental Health Days/Month	4.0	4.0	4.4

## Essential Service 2

### Investigate, diagnose, and address health problems and hazards affecting the population

Essential service 2 includes provision of epidemiological identification of emerging health threats, investigation of infectious disease and human health hazards and prevention of disease through immunizations.

### Communicable Disease Control

Surveillance, investigation and follow-up of reportable diseases are statutory responsibilities of local health departments. Follow up is conducted to ensure measures are taken to prevent potential disease transmission.

**2023 Outcomes:**

- Public Health conducted **2113** investigations on reportable communicable diseases cases in Washington County and **1225** in Ozaukee County, for a total of **3338** investigations. These numbers changed significantly from 2022 to 2023 due to reporting changed at the state level.
- **4** TB skin tests placed for contacts to an active TB case in our counties in 2023.

<i>Sample of Diseases</i>	<i>WC</i>	<i>OC</i>
<i>Arboviral</i>	0	1
<i>Campylobacter</i>	28	22
<i>Cryptosporidium</i>	7	2
<i>E.Coli</i>	38	34
<i>Food/Water Outbreak</i>	0	0
<i>Giardia</i>	6	10
<i>Hep A</i>	0	0
<i>Hep B</i>	3	5
<i>Hep C</i>	20	11
<i>Lyme Disease</i>	144	68
<i>Mumps</i>	1	0
<i>Salmonella</i>	28	18
<i>STDs:</i>		
<i>Chlamydia</i>	205	126
<i>Gonorrhea</i>	19	29
<i>TB Active</i>	0	0
<i>Latent TB</i>	61	35
<i>Varicella</i>	1	3

## Emergency Preparedness

WOPHD is focused on maintaining a proactive emergency preparedness response. Implicit in this goal is the need to cultivate and sustain robust planning and response capabilities. The development of these capabilities is fostered in conjunction with contract objectives associated with Public Health Emergency Preparedness (PHEP) and Cities Readiness Initiative (CRI) grant funding. Taken together, these efforts place WOPHD in a position to enhance the safety of our community by maintaining an effective all-hazards preparedness program. In addition to meeting contract objectives, our department also focused on increased collaboration with county level emergency management this year.

**2023 Outcomes:**

- Conducted annual Hazard Vulnerability Analysis
- WOPHD Emergency Preparedness Coordinator served as Chair of the Executive Committee for Southeast Wisconsin Healthcare Emergency Readiness Coalition

- Updated Business Continuity Plan and process
  - Incorporated insights from Hazard Vulnerability Process
  - Conducted a comprehensive Business Impact Analysis
  - Identified Essential Functions for each Health Department business unit
  - Developed Business Continuity mitigation and response protocols
- Conducted a Business Continuity tabletop exercise with health department staff
- Washington Ozaukee Healthcare Partners including:
  - Healthcare systems
  - LTCFs
  - Public Safety
  - Emergency Management
  - Community Organizations
- Maintained a roster of extreme weather respite sites
- Began planning preparations for the 2024 RNC
- Formed workgroups of health department staff to better focus on mass care and point-of-dispensing planning
- Formed Mass Care planning workgroups with the Human Services and Emergency Management departments in Washington and Ozaukee counties.

## Environmental Health Information and Consultation Services

WOPHD investigates complaints related to environmental health and provides environmental health resources to residents. Environmental Health Specialists provide consultation on private well testing, and advice on a host of issues, including air quality concerns, mold, radon, animal and insect complaints, lead and asbestos hazards, and other environmental health issues. The goal of this program is to protect the health of residents from environmental related illness and disease.

### **2023 Outcomes:**

- Environmental health staff responded to approximately 2,580 public health inquiries in Washington and Ozaukee Counties, a significant increase over previous years.

## Immunization Program

WOPHD aims to reduce or eliminate vaccine preventable diseases. In 2023, 229 vaccines were administered to prevent infectious disease. Staff work closely with school districts to assure school age children are in compliance with the Wisconsin State Immunization Law and began restructuring clinic flow at both of our office locations to improve the client experience related to immunizations.

**2022-2023 School Year Outcomes**

<i>Ozaukee County School Districts</i>	<i>Percent of students compliant with WI law</i>
<b>Cedarburg</b>	100
<b>Grafton</b>	99.76
<b>Mequon/Thiensville</b>	100
<b>Northern Ozaukee</b>	96.38
<b>Port Washington/Saukville</b>	No Report

<i>Washington County School Districts</i>	<i>Percent of students compliant with WI law</i>
<b>Germantown</b>	96.61
<b>Hartford J1</b>	98.09
<b>Hartford UHS</b>	97.97
<b>Kewaskum</b>	97.85
<b>Holy Hill Area Sch Dist</b>	No Report
<b>Slinger</b>	99.97
<b>West Bend</b>	100
<b>State of Wisconsin</b>	97.67

## Seasonal Influenza

WOPHD offers flu vaccine in office to ensure our residents are protected from seasonal influenza. Influenza (flu) is a contagious respiratory disease that can lead to serious complications, hospitalization, or even death. Anyone can get the flu, and vaccinating against the flu is the single best way to prevent illness. The CDC recommends everyone 6 months of age and older is vaccinated against the flu every year.

**2023 Outcomes:**

- WOPHD staff vaccinated **32** residents against influenza

## Lead Poisoning Prevention

Children at risk for lead poisoning receive blood lead testing at the ages of 1 and 2, or between the ages of 3 and 5 years if they do not have a documented test. Lead test results from private medical providers are also recorded in the child’s WIC record to assure appropriate follow up and testing is completed.

This program provides education on prevention of lead exposure and case management services to families of children whose confirmed lead levels are 3.5 mcg/dl or higher.

Our department also kicked off a childhood lead poisoning prevention campaign in January of 2023, with intent to raise awareness of the dangers of childhood lead poisoning and methods for prevention. Public Health nursing staff provided guidance to local pediatric healthcare providers regarding the importance of childhood lead testing and the public health department offered free monthly



lead testing clinics for the public in both offices, to increase access to lead testing and give families who may have missed this testing during recent years and opportunity to catch up with recommendations. Information regarding lead testing and childhood lead poisoning is available on the campaign landing page, [gettestedforlead.com](http://gettestedforlead.com).

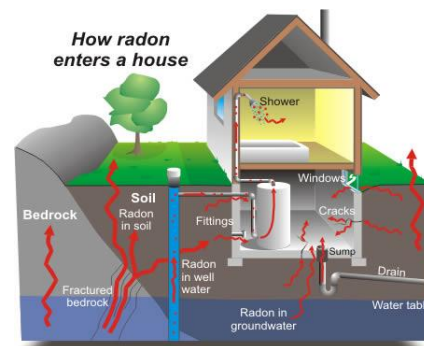
WOPHD’s end goals for this campaign are to see a continued increase in the percentage of Washington and Ozaukee County residents who are tested for lead between 2022 and 2024, along with standardization across healthcare organizations for childhood lead testing.

### 2023 Outcomes

Indicator	Total
# of children tested for lead poisoning	1,549
# of children who had elevated lead level tests over 3.5mcg/dl	21

## Radon Testing

WOPHD is the designated Radon Information Center. The dollars received from the Wisconsin Division of Public Health allow health department staff to distribute radon kits at a reduced price and provide radon education to county residents. For the second time, WOPHD celebrated National Radon Action Month by staffing booths outside both offices for a full day in January to provide free kits to the public and answer questions about radon, which contributed towards an increase in the total number of kits distributed this year.



### 2023 Outcomes:

- 11 long-term radon kits and 414 short-term kits were distributed to Washington and Ozaukee residents

## Essential Service 3

### Communicate effectively to inform and educate people about health, factors that influence it, and how to improve it

Essential service 3 includes social marketing, targeted media public communication, providing accessible health information, and resources to reinforce health promotion messages and programs.

### Car Seat Education and Installation

Car seat installation is imperative to keeping children safe while traveling in motor vehicles. WOPHD teaches families how to safely transport their children using car seats, booster seats and seat belts correctly. Child safety seats that are used correctly reduce the risk of death by as much as 71%. In 2023, WOPHD resumed monthly clinics in both Washington and Ozaukee Counties, which had been greatly impacted by the pandemic in recent years. Our department received a grant from the Bureau of Transportation Safety (BOTS) which allows our certified child passenger safety technicians to assist low-income families with start-up costs associated with child safety seats.

### 2023 Outcomes:

- 52 child safety seats were evaluated for proper installation.
- 4 infant seats and 11 convertible seats were distributed and properly installed

## Social Media Presence

WOPHD uses social media to educate the public about health issues and concerns. Facebook and Instagram postings weekly, providing timely health information. Our department now has a designated social media and communications team, which has allowed us to focus more heavily on targeted messaging and intentional outreach to the public.

### 2023 Outcomes:

- Continued social media presence regarding important topics each month
- Promotion of community health related events through social media
  
- Washington Ozaukee Public Health Department Facebook
  - Reached 528,500 - a 600% increase over 2022!
  - 7,000 visits
  - 5,786 Followers
  
- WOPHD Instagram
  - Reached 281,300
  - 605 visits
  - 557 Followers

## Essential Service 4

### Strengthen, support, and mobilize communities and partnerships to improve health

Essential service 4 focuses on convening and facilitating community groups in undertaking defined preventive and population focused activities in order to pool expertise and leverage all potential resources to solve community health problems.

Between Washington and Ozaukee Counties, WOPHD leads several community coalitions, all of which have been officially merged as of 2023.

### Washington Ozaukee Coalition for Sexual Wellness

The Washington Ozaukee Coalition for Sexual Wellness has been meeting since 2019 under the leadership of the health department. The coalition was created in response to the 2018 Youth Risk Behavior Survey (YRBS) administered in six Washington County school districts. The YRBS is a survey managed by the Department of Public Instruction meant to monitor health-related behaviors among youth. The mission of this coalition is to advocate for sexual wellness in our communities by promoting factual, realistic information on human growth and development, sexual behaviors/education and reproductive health.

## Washington Ozaukee Substance Use Coalition – New in 2023!

The Washington County Heroin Task Force and the Ozaukee Substance Use Task Force were formed separately in response to an increase in opiate and heroin use in both counties. The long-term goal of these groups was to maintain the highest quality of life through the elimination of opioid abuse, achieved by community partnerships focused on prevention, policy, education, enforcement and treatment.

Both groups originally consisted of community participation and partnerships with many agencies across the counties including law enforcement, schools, elected officials, businesses, county departments, and volunteers. The Ozaukee Substance Use Task Force was led by the Washington Ozaukee Public Health Department. The Washington County Heroin Task Force was led in conjunction with community partner, Elevate (non-profit AODA agency). Beginning in January 2023, these two separate task forces have voted to join forces as one shared Washington Ozaukee Substance Use Coalition, which our department had identified as an important step forward in taking shared ownership over the substance use crisis in our counties. Together, this new coalition has already begun to tackle many of the substance use related health priorities outlined in our community health improvement plan.

### 2023 Outcomes:

- Spring and Fall Drug Take Back Day Events in both counties
- Fourteen permanent medication collection sites
- Coordination of Ozaukee Criminal Justice Coordinating Council
- NARCAN Direct Program
- Candlelight Vigils
- Substance Use Jail Survey Complete
- Ozaukee County redesigned Substance Use Toolkit
- Voted to combine Ozaukee Substance Use Task Force and Washington County Heroin Task Force

### April 2023 Drug Take Back Day: 140 Cars

Ozaukee County Substances: 311 lbs	Washington County Substances: 118.2 lbs	Concordia University Substances: 511 lbs
---------------------------------------	--	---

### October 2023 Drug Take Back Day: 173 Cars

Ozaukee County Substances: 161 lbs	Washington County Substances: 84.8 lbs	Concordia University Substances: 431 lbs
---------------------------------------	---	---

## Child Death Review Team

Child Death Review teams (CDRT) meet to review and discuss circumstances involved in child deaths in both counties. The role of CDR is to determine how the death could have been prevented and if families and close contacts are offered appropriate support and resources. CDR teams provide recommendations for interventions and strategies to prevent future child death. The Washington and Ozaukee Child Death Review Teams met once in 2021 to revisit the structure, partnership and purpose of child death review. This meeting was foundational to the continuation of this work. In 2022, WOPHD merged the two counties into one shared multi-agency, multi-disciplinary Washington Ozaukee Child Death Review Team, including representatives from both counties. The newly merged CDRT began to meet more regularly in 2023, as cases became available for review.

## Change the Ending Campaign

In July 2022, the Washington County Department of Health & Human Services began a new mental health and substance use campaign to increase awareness of available resources. The “Change the Ending” campaign was developed by Human Services and Public Health staff to help those who are suffering from mental health or addiction and their loved ones to find treatment options in Washington County. This campaign includes advertisements, social media postings and a website dedicated to helping individuals connect with resources. By the end of 2022, over 200,000 individuals were reached through online postings, which linked over 6,000 individuals to the Change the Ending website.

In 2023, WOPHD assumed responsibility for this campaign and expanded it into Ozaukee County, which resulted in the addition of resources to the campaign’s landing page for Ozaukee residents. Overall, this campaign was successful in generating awareness and reaching a large audience. End results of the media campaign showed a higher male audience, mostly in the 25-34 age range. Outcomes below outline the number of individuals who were connected to mental health or substance use resources in our counties due to this campaign through the associated website.

### **2023 Outcomes:**

#### **Meta Campaign:**

- 1,458,565 individuals reached
- 4,287,743 impressions on social media
- 13,610 clicks on advertisements
- 4,498 link clicks

#### **Website Landing Page:**

- 7,572 total page visits
- 4,919 users
- 337 clicks on resource page
- 93 clicks on link to emergency resources

## Essential Service 5

### Create, champion, and implement policies, plans, and laws that impact health

Essential service 5 refers to provision of leadership for systemic community and state level planning for health improvement, development and tracking of measurable health objectives as part of a continuous quality improvement strategy and development of codes, regulations and legislation to guide the practice of public health.

Because health issues often cross jurisdictional boundaries and the top three health priorities for Washington and Ozaukee Counties are identical, our 2022-2025 Community Health Improvement Plan was written to address these three priority areas as one merged department, sharing goals for improving the health of our communities across county lines. This merged CHIP also laid the foundation and groundwork for merging our separate Washington and Ozaukee County coalitions, to better address the needs of our communities. Our team facilitates community conversations that are focused on addressing key health priorities at the individual, family, environmental, and policy level with the goal of improving the health and wellbeing of our residents. We do this in partnership with community organizations and interested citizens.

Our health priorities, as outlined in our 2022-2025 CHIP, are congruent in Washington and Ozaukee Counties. While priorities are the same, we understand that demographics, populations, and services may be different in each county and we work to address those discrepancies in the design of our work within the coalitions. Public Health strategy staff worked with each of our coalitions throughout 2023 to create and implement a new shared mission and vision for each coalition. The Community Health Improvement Plan for 2022-2025 which provided an outline for this work can be found in Appendix A.

## Essential Service 6

### Utilize legal and regulatory actions designed to improve and protect the public's health

Essential service 6 refers to protection of drinking and recreational water supplies, enforcement of clean air standards, food safety and licensing and timely follow-up of environmental health concerns.

#### Beach Monitoring Program

WOPHD monitors the public beaches in both counties through a grant from the Wisconsin DNR. Public beach water is monitored from Memorial Day through Labor Day for elevated E. Coli levels and adverse conditions. After monitoring, WOPHD uses E. Coli levels to determine beach advisories and closures, which are posted through signage and online. WOPHD also uses a Twitter account to post results:

@OzaukeeBeach. In 2023, public health beach testing staff conducted new detailed reports of several beaches we regularly test, to help determine how to best manage any future conditions that may lead to contamination.

**2023 Outcomes:**

- 1 Beach closure occurred due to bacteria exceedance, with 4 advisory days, a decrease from 2022.

## DNR Well Water Program

WOPHD inspects and tests transient wells in Washington, Ozaukee and Milwaukee Counties through a grant from the Wisconsin Department of Natural Resources. The program requires an annual test for bacteria and nitrate for any well that has public access to water for at least 25 individuals per day for at least 60 days of the year.

**2023 Outcomes:**

- 425 establishments completed water testing
- 89 well system sanitary survey inspections were conducted

## Food and Recreational Safety Program

WOPHD is an agent for the Wisconsin Department of Agriculture, Trade and Consumer Protection (DATCP) and the Department of Safety and Professional Services (DSPA) in Washington County. WOPHD provides inspections, consultation and licensing services for: Restaurants and Retail Food; Public Swimming Pools and Water Attractions; Hotels, Motels, Tourist Rooming Houses and Bed and Breakfasts; Tattoo and Body Piercing; and Campgrounds and Recreational/Education Campgrounds. By the end of 2023, our entire team of environmental health specialists have completed the requirements for obtaining Registered Sanitarian credentials and completed internal standardization processes.

**2023 Outcomes:**

- 1314 routine licensing inspections were completed
- 128 pre-inspections were completed
- 166 follow-up inspections were completed

## Essential Service 7

### Assure an effective system that enables equitable access to the individual services and care needed to be healthy

Essential service 7 assures effective entry for disadvantaged people to a coordinated system of care, linkage of services for special population groups, and technical assistance for effective worksite health promotion/disease prevention programs.

## Women, Infant, and Children (WIC) Nutrition Program

The Women Infant and Children program (WIC) promotes and maintains the health and well-being of nutritionally at-risk pregnant, breastfeeding and postpartum women, infants and children. WIC provides supplemental nutritious foods, nutrition and breastfeeding information and referral to other health and nutrition services. Due to the Covid-19 waivers that remain in place, most of 2022 WIC appointments were completed over the phone and referral data for height, weight, hemoglobin, and lead level were used for nutrition assessment. Furthermore, blood lead screenings were not performed in office 2022 and participants were encouraged to be screened for lead at their local health providers.

### **2023 Outcomes:**

- 2,065 participants were served by WIC in both counties
- \$1,539,777.22 worth of WIC benefits were redeemed at local vendors in both counties

## WIC Referrals

Women and families are referred to additional community resources based on their needs using a maternal and child health assessment tool. Referrals currently being made may include fluoride, immunizations, lead concerns, car seats, breastfeeding, home safety, child development, mental health, substance use, smoking cessation and more.

### **2023 Outcomes:**

- 1,123 women or families were referred to additional resources
- 186 families attended the Summer Community Connection Markets in both Washington Ozaukee counties
- 80 families attended Winter Ozaukee County Toy drive where WIC and MCH provided resources and education during event

## Community Connections

In 2023, WOPHD hosted our third annual Community Connections Market which invited WIC families and community families with young children in need to attend a drive through resource fair in each county. This event provided an opportunity for distribution of farmer's market vouchers to families participating in WIC, as well as connecting families to other resources in our counties. In addition to WIC, other WOPHD staff were also in attendance to provide education on car seat safety, hand out baby supplies, and distribute Narcan to families who were interested.

**Washington County**

**Vendors:** Casa Guadalupe, Community Smiles, Excellence Centers, Froedtert Health, Human Services, Kettle Moraine YMCA, Seed of Hope, UW Extension, WOPHD

**278** children served

**223** Farmers Market Booklets issued (\$6,690)

**24** doses of Narcan distributed by WOPHD

**Ozaukee County**

**Vendors:** Community Smiles, Family Sharing, Froedtert Health, Human Services, Ozaukee Family Services, Seed of Hope, WOPHD

**178** children served

**99** Farmers Market booklets issued (\$2,970)

**12** doses of Narcan distributed by WOPHD

## Wisconsin Well Woman Program (WWWP)

WWWP provides preventive screening services for breast and cervical cancer to low income, uninsured or underinsured women residing in Wisconsin. Women screened and diagnosed with breast or cervical cancer may be eligible for Wisconsin Well Woman Medical Assistance (WWMA) for treatment.

### 2023 Outcomes:

- 15 women enrolled.

## Essential Service 8

### Build and support a diverse and skilled public health workforce

Essential service 8 assures education and training of personnel to meet the needs for public and personal health service; adoption of continuous quality improvement and life-long learning; and active partnership with academic institutions. In order to provide the highest quality public health service, WOPHD strives to ensure that all of our staff possesses the knowledge, skills and abilities to perform their jobs effectively and efficiently.

### Linkages with Academia

WOPHD has strong partnerships with local institutions of higher education and serves as a site for student placement, observation, practice experience and internship whenever possible.

### 2023 Outcomes:

- WOPHD hosted one student intern in 2023, who assisted public health strategy staff with compiling local health data and planning for future CHIP.
- WOPHD is represented on the Concordia University School of Nursing Advisory Board
- Continued partnership with Concordia University for mass care/point of dispensing planning

## Essential Service 9

### Improve and innovate public health functions through ongoing evaluation, research, and continuous quality improvement

Essential service 9 refers to ongoing evaluation of health programs to assess program effectiveness and to provide information necessary for allocating resources and shaping programs. Each WOPHD program area will continue to be evaluated as we continue to rebuild public health services.

### Health and Family Services (HFS) 140 Review

The Wisconsin Department of Health Services is required to formally review the operations of all Wisconsin Local Health Departments every five years. The review establishes the health department as a level I, II, or III agency. A level I agency meets the minimum requirements and a level III meets the maximum requirements established for local health departments. As a newly merged department, WOPHD underwent a 140 Review and achieved a level III designation in the summer of 2018. Public Health staff spent most of 2023 revisiting policies and procedures in preparation for our 2023 review, which took place in October.

WOPHD leadership submitted documentation to DHS and hosted DHS staff at our Ozaukee office for a half-day in person meeting to discuss departmental programs and services along with our request to maintain a level III public health department status in 2023. Positive findings from this review led to an award from DHS for continuation of our level III status for the next five year cycle. The award letter from DHS to our Board of Health can be found in Appendix B.

### Strategic Planning

In the fall of 2022, WOPHD staff began working with a public health consultant through a series of planning sessions to review current community health data, review programs and services currently provided by our department, and reflect upon the shifts that have occurred in public health and within our own department in the past several years. Department staff worked together to complete an environmental scan/situational awareness activity, identify a shared vision and set a new strategic direction to carry our department through the next several years.

This plan was finalized and implementation began in early 2023, giving our staff a new purpose, mission and philosophy that identifies the values that we as a department hold in fulfilling our purpose and carrying out our mission.

### Optional Department Assessments

WOPHD also participated in a rigorous Costing and Capacity Assessment in 2023, which was an optional statewide assessment of public health departments using the foundational public health services framework to provide access to public health services to every person in Wisconsin and address the

current challenges of public health. This assessment was meant to measure our department's current ability to provide baseline services utilizing data from 2022. When results of this survey are shared in 2024, our department plans to use this assessment as a guiding tool at our local level to implement change where we need it most, utilizing the funding we have available.

## Essential Service 10

### Build and maintain a strong organizational infrastructure for public health

Essential Service 10 includes developing an understanding of the broader organizational infrastructures and roles that support the public health system in a jurisdiction, or in our case a multi-jurisdictional partnership. Essential service 10 also ensures that communications and strategic planning capabilities are employed by effective and ethical leadership, information technology services are current, and finances are managed effectively.

## Innovative Partnerships & Awards

### **2023 Outcomes:**

- The health department was honored to receive a level III health department designation by DHS

## **Appendix A**

[Washington Ozaukee Community Health Improvement Plan 2022-2025](#)

## **Appendix B**

[DHS Award Letter](#)