

Annual Report

2022

The Washington Ozaukee Public Health Department 2022 Annual Report shares details of how we carry out our mission to improve the quality of life for Washington and Ozaukee residents by promoting, protecting and enhancing the health and well-being of the public.

This report is structured to address the 10 Essential Public Health Services, which provide a framework for public health. These services guide our daily work and remind us of the responsibilities we have to prevent illness, promote health, and protect our community.

As we continue to respond to and recover from the COVID-19 pandemic, we recognize that we cannot do this work alone. We deeply appreciate each of our community partners who work with us to sustain and improve the health of Washington County and Ozaukee County residents.

Thank you for supporting WOPHD in 2022.



Kim Buechler
Director/Health Officer

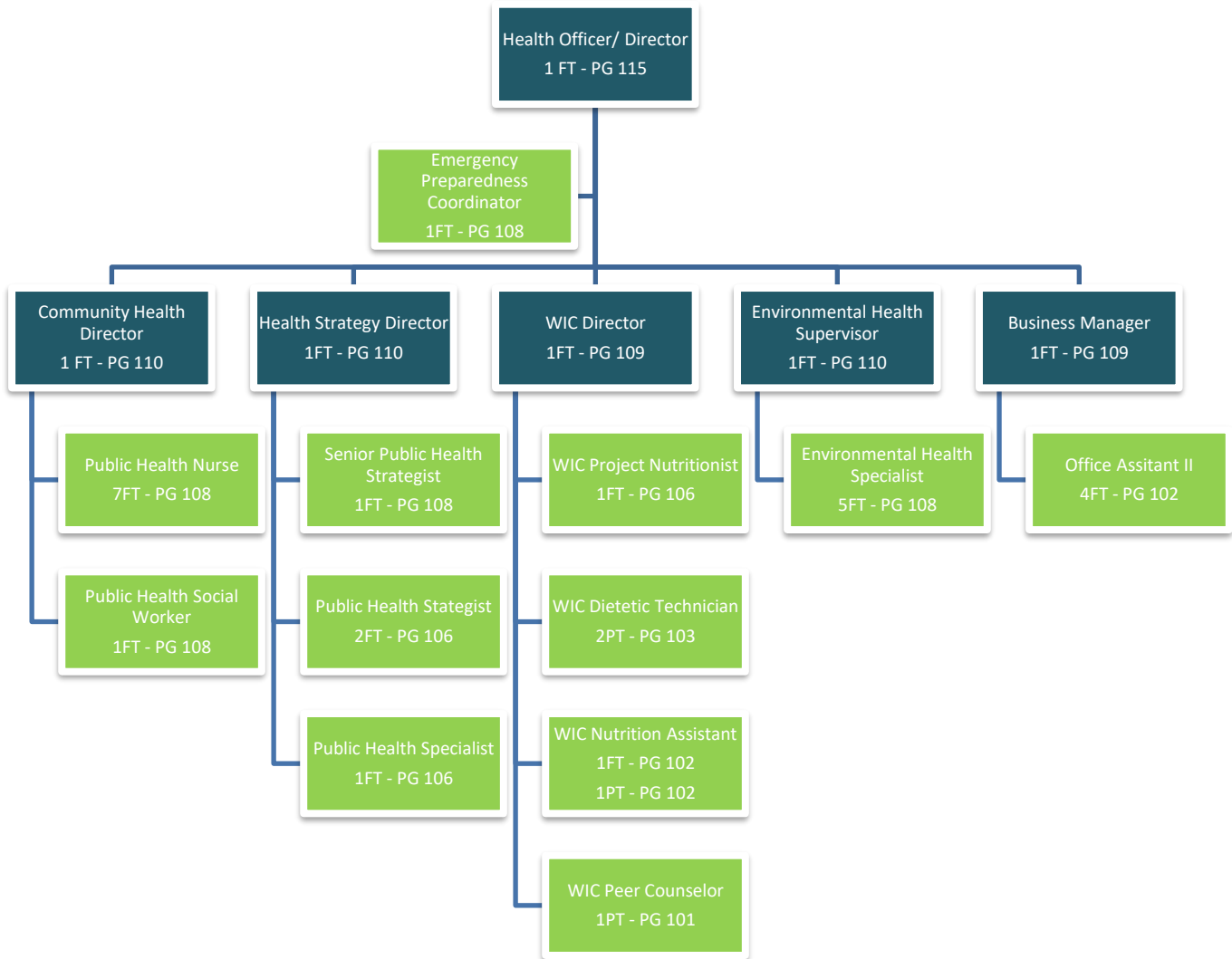
Washington Ozaukee Public Health Department

Annual Report 2022

Table of Contents

Organization Chart	3
Washington Ozaukee Joint Board of Health	3
Washington Ozaukee Public Health Department (WOPHD)	4
Essential Service 1: Assess and Monitor Population Health	5
Essential Service 2: Investigate, Diagnose and Address Health Problems	5
Essential Service 3: Communicate Effectively	9
Essential Service 4: Stengthen, Support and Mobilize	10
Essential Service 5: Create, Champion and Implement	13
Essential Service 6: Utilize Legal and Regulatory Actions	13
Essential Service 7: Assure an Effective System	14
Essential Service 8: Build and Support a Skilled Workforce	17
Essential Service 9: Improve and Innovate Public Health Functions	17
Essential Service 10: Build and Maintain Organizational Structure	18
Appendices	19
Appendix A: Sexual Wellness Report	19
Appendix B: Ozaukee County CHNA	19
Appendix C: Washington County CHNA	19
Appendix D: Washington Ozaukee Community Health Improvement Plan 2022-2025	19

Organization Chart



Washington Ozaukee Joint Board of Health

Washington County Representatives

Jodi Schulteis, County Board Member
 Jeffrey Schleif, County Board Chair
 Linda Gurath, County Board Member
 Doreen Buntrock, Citizen Member
 Travis Dowden, Citizen Member

Ozaukee County Representatives

James Krane, County Board Member
 Donald Clark, County Board Member
 Nitish Bangalore, Citizen Member
 Doug McManus, Citizen Member

Dr. Steven Zils, Aurora, Medical Advisor

Washington Ozaukee Public Health Department (WOPHD)

Vision & Mission

Vision: To be innovators in fostering healthy people, places and communities.

Mission: Improve quality of life by promoting, protecting and enhancing the health and well-being of the public.

THE 10 ESSENTIAL PUBLIC HEALTH SERVICES

To protect and promote the health of all people in all communities

The 10 Essential Public Health Services provide a framework for public health to protect and promote the health of all people in all communities. To achieve optimal health for all, the Essential Public Health Services actively promote policies, systems, and services that enable good health and seek to remove obstacles and systemic and structural barriers, such as poverty, racism, gender discrimination, and other forms of oppression, that have resulted in health inequities. Everyone should have a fair and just opportunity to achieve good health and well-being.

Assessment

- 1 Assess and monitor population health status, factors that influence health, and community needs and assets
- 2 Investigate, diagnose, and address health problems and hazards affecting the population

Policy Development

- 3 Communicate effectively to inform and educate people about health, factors that influence it, and how to improve it
- 4 Strengthen, support, and mobilize communities and partnerships to improve health
- 5 Create, champion, and implement policies, plans, and laws that impact health
- 6 Utilize legal and regulatory actions designed to improve and protect the public's health

Assurance

- 7 Assure an effective system that enables equitable access to the individual services and care needed to be healthy
- 8 Build and support a diverse and skilled public health workforce
- 9 Improve and innovate public health functions through ongoing evaluation, research and continuous quality improvement
- 10 Build and maintain a strong organizational infrastructure for public health

Essential Service 1

Assess and monitor population health status, factors that influence health, and community needs and assets

Essential Service 1 includes assessment of the health status of the community through formal and informal needs assessments and data analysis. The Washington Ozaukee Public Health Department collaborates with a broad group of community partners to address our health needs. Community health improvement planning and leading health indicator data guide our health focus areas.

Washington and Ozaukee Health Status

County Health Rankings collect data for every county in the United States and provide a state ranking. In 2022, Ozaukee was ranked the healthiest county in Wisconsin and Washington was ranked the 5th healthiest.

2022 Outcomes

- Despite the high rankings, health data of concern include the percentage of adults who smoke, are obese, drink excessively (defined as adults who report binge or heavy drinking in the past 30 days) and the number of self-reported poor mental health days. The number of poor mental health days has continued to increase from 2021 to 2022, following a statewide trend.

Health Indicator	Washington	Ozaukee	Wisconsin
Adult Obesity	33%	32%	34%
Adult Smoking	15%	13%	16%
Excessive Drinking	28%	28%	25%
Poor Mental Health Days/Month	4.0	3.7	4.4

Essential Service 2

Investigate, diagnose, and address health problems and hazards affecting the population

Essential service 2 includes provision of epidemiological identification of emerging health threats, investigation of infectious disease and human health hazards and prevention of disease through immunizations.

Communicable Disease Control

Surveillance, investigation and follow-up of reportable diseases are statutory responsibilities of local health departments. Follow up is conducted to assure measures are taken to prevent potential disease transmission.

2022 Outcomes

- Public Health Nurses conducted **761** investigations on reportable communicable diseases cases in Washington County and **412** in Ozaukee County, for a total of **1173**.

<i>Sample of Diseases</i>	<i>WC</i>	<i>OC</i>
<i>Arboviral</i>	1	0
<i>Campylobacter</i>	16	15
<i>Cryptosporidium</i>	3	6
<i>E.Coli</i>	21	17
<i>Food/Water Outbreak</i>	0	0
<i>Giardia</i>	11	6
<i>Hep A</i>	0	0
<i>Hep B</i>	7	6
<i>Hep C</i>	19	7
<i>Lyme Disease</i>	155	60
<i>Mumps</i>	1	0
<i>Salmonella</i>	20	13
<i>STDs:</i>		
<i>Chlamydia</i>	202	123
<i>Gonorrhea</i>	51	20
<i>TB Active</i>	1	0
<i>Latent TB</i>	35	13
<i>Varicella</i>	1	4

Emergency Preparedness

WOPHD is focused on maintaining a proactive emergency preparedness response, which we have continued to expand upon throughout the COVID-19 pandemic. Implicit in this goal is the need to cultivate and sustain robust planning and response capabilities. The development of these capabilities is fostered in conjunction with contract objectives associated with Public Health Emergency Preparedness (PHEP) and Cities Readiness Initiative (CRI) grant funding. Taken together, these efforts place WOPHD in a position to enhance the safety of our community by maintaining an effective all-hazards preparedness program.

2022 Outcomes

- Met the objectives levied by PHEP and CRI grant funding agreements. Some of these objectives include:
 - Ensuring all staff have a minimum level of Incident Command System (ICS) training
 - Maintaining a jurisdictional administrator for volunteer management programs
 - Participation in the regional Healthcare Emergency Readiness Coalition (HERC)

- Conducting inclusive risk planning for the whole community, including vulnerable populations
- Expanded departmental use of Incident Command Platform called ReadyOp to provide an efficient way for staff to conduct tasks and manage mass clinics, internal and external communication.
- Maintained valuable partnerships with many community and regional groups including:
 - Ozaukee County Healthcare Partners
 - Washington County Healthcare Partners
 - Local Emergency Planning Commission (LEPC)
 - Ozaukee Fire Association
 - Whole Community Preparedness Group
 - Southeast Wisconsin HERC
 - Quad County Emergency Preparedness Group

Environmental Health Information and Consultation Services

WOPHD investigates complaints related to environmental health as well as provides environmental health resources to residents. Environmental Health Specialists provide consultation on private well testing, and advice on a host of issues, including air quality concerns, mold, radon, animal and insect complaints, lead and asbestos hazards, and other environmental health issues. The goal of this program is to protect the health of residents from environmental related illness and disease.

2022 Outcomes

- Environmental health staff responded to approximately 2,580 public health inquiries in Washington and Ozaukee Counties, a significant increase over previous years.

Immunization Program

WOPHD aims to reduce or eliminate vaccine preventable diseases. In 2022, **232** vaccines were administered to prevent infectious disease.

Staff work closely with school districts to assure school age children are in compliance with the Wisconsin State Immunization Law.

2021-2022 School Year Outcomes

<i>Ozaukee County School Districts</i>	<i>Percent of students compliant with WI law</i>
<i>Cedarburg</i>	<i>100</i>
<i>Grafton</i>	<i>99.76</i>
<i>Mequon/Thiensville</i>	<i>100</i>
<i>Northern Ozaukee</i>	<i>96.38</i>
<i>Port Washington/Saukville</i>	<i>No Report</i>

<i>Washington County School Districts</i>	<i>Percent of students compliant with WI law</i>
<i>Germantown</i>	<i>96.61</i>
<i>Hartford J1</i>	<i>98.09</i>
<i>Hartford UHS</i>	<i>97.97</i>
<i>Kewaskum</i>	<i>97.85</i>
<i>Holy Hill Area Sch Dist</i>	<i>No Report</i>
<i>Slinger</i>	<i>99.97</i>
<i>West Bend</i>	<i>100</i>
<i>State of Wisconsin</i>	<i>97.67</i>

Seasonal Influenza

WOPHD offers flu vaccine in office to ensure our residents are protected from seasonal influenza. Influenza (flu) is a contagious respiratory disease that can lead to serious complications, hospitalization, or even death. Anyone can get the flu, and vaccinating against the flu is the single best way to prevent illness. The CDC recommends everyone 6 months of age and older is vaccinated against the flu every year.

2022 Outcomes

- WOPHD staff vaccinated **31** residents against influenza

Lead Poisoning Prevention

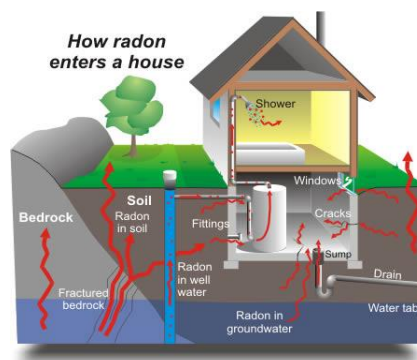
Children at risk for lead poisoning receive blood lead testing at the ages of 1 and 2, or between the ages of 3 and 5 years if they do not have a documented test. Lead test results from private medical providers are also recorded in the child's WIC record to assure appropriate follow up and testing is completed. This program provides education on prevention of lead exposure and case management services to families of children whose confirmed lead levels are 3.5 mcg/dl or higher. WOPHD elected to lower this threshold in 2022 from 5 mcg/dl, to provide case management for more at-risk families.

2022 Outcomes

Indicator	Washington	Ozaukee	Total
# of children tested for lead poisoning	787	661	1148
# of children who had elevated lead level tests over 3.5mcg/dl			12

Radon Testing

WOPHD is the designated Radon Information Center. The dollars received from the Wisconsin Division of Public Health allow health department staff to distribute free radon kits and provide radon education to county residents. For the second time, WOPHD celebrated National Radon Action Month by staffing booths outside both offices for a full day in January to provide free kits to the public and answer questions about radon, which contributed towards an increase in the total number of kits distributed this year.



2022 Outcomes

- 13 long-term radon kits and 424 short-term kits were distributed to Washington and Ozaukee residents

Essential Service 3

Communicate effectively to inform and educate people about health, factors that influence it, and how to improve it

Essential service 3 includes social marketing, targeted media public communication, providing accessible health information, and resources to reinforce health promotion messages and programs.

Car Seat Education and Installation

Car seat installation is imperative to keeping children safe while traveling in motor vehicles. WOPHD teaches families how to safely transport their children using car seats, booster seats and seat belts correctly. Child safety seats that are used correctly reduce the risk of death by as much as 71%. WOPHD typically provides monthly car seat clinics to the community in each county, offering car seat checks, and education. The COVID-19 pandemic impacted our ability to perform child safety seat checks in 2020, but we were able to begin providing car seat checks at our offices by appointment only, midway through 2021. In 2022, our team of certified car seat technicians continued to provide appointments in both offices and began to host monthly clinics again towards the end of the year.

2022 Outcomes

- 48 child safety seats were evaluated for proper installation.

General Health Education

WOPHD provides partnership, education, and support to local school districts, community groups and office clients, and more. Topics may include breastfeeding, nutrition and physical activity, alcohol, tobacco, substance use prevention, mental health referral assistance, growth and development, and infectious disease prevention.

2022 Outcomes

- Continued social media presence as part of ongoing COVID-19 pandemic response
- Provided updated guidance on pandemic response for a variety of stakeholders including schools, businesses and daycares.

Social Media Presence

WOPHD uses social media to educate the public about health issues and concerns. Facebook and Instagram postings weekly, providing timely health information. Our department's social media followers more than doubled from 2021 to 2022.

2022 Outcomes

- Washington Ozaukee Public Health Department Facebook
 - Reached 74,765
 - 4,335 Likes
 - 5,754 Followers
- WOPHD Instagram
 - Reached 516
 - 546 Followers

Essential Service 4

Strengthen, support, and mobilize communities and partnerships to improve health

Essential service 4 focuses on convening and facilitating community groups in undertaking defined preventive and population focused activities in order to pool expertise and leverage all potential resources to solve community health problems.

Between Washington and Ozaukee Counties, WOPHD leads several community coalitions, several of which are undergoing mergers to be completed in 2023.

Well Washington County & INVEST Ozaukee County

Well Washington County and INVEST Ozaukee County are two independent coalitions that oversee public health activities in both counties. Each coalition uses community-based approaches to identify residents' health priorities and works toward improving health outcomes. Well Washington County and INVEST Ozaukee County members include: community members, nonprofit organizations, businesses,

government agencies, school districts, public health, and health systems. The purpose of the coalitions is to mobilize stakeholders to make a measurable impact on the health needs of Washington and Ozaukee counties.

Leveraging the expertise and resources of the larger group, Well Washington County and INVEST Ozaukee County work to sustain and improve the health of residents by promoting physical activity and nutrition, improved mental health, prevention of youth alcohol and tobacco use, and the elimination of substance abuse. Most coalition activities were put on hold in 2020 due to the COVID-19 pandemic and were led by community partners through 2021, as WOPHD went through a large transition in leadership.

While these coalitions were on hold, community partners stepped up to continue this important work. WOPHD re-joined the Ozaukee County Mental Health Coalition in 2022 as co-chair and the new Washington Ozaukee Mental Health Coalition was formed at the end of the year to include members from Washington County. WOPHD is excited to continue partnering on this important work into 2023.

Washington Ozaukee Coalition for Sexual Wellness

The Washington Ozaukee Coalition for Sexual Wellness has been meeting since 2019 under the leadership of the health department. The coalition was created in response to the 2018 Youth Risk Behavior Survey (YRBS) administered in six Washington County school districts. The YRBS is a survey managed by the Department of Public Instruction meant to monitor health-related behaviors among youth. The mission of this coalition is to advocate for sexual wellness in our communities by promoting factual, realistic information on human growth and development, sexual behaviors/education and reproductive health. In 2022, along with the Washington Ozaukee Coalition for Sexual Wellness, the Washington Ozaukee Public Health Department published a report on Sexual Wellness in Washington and Ozaukee Counties from 2010-2020. This report can be found in Appendix A.

Washington County Heroin Task Force & Ozaukee County Substance Use Task Force

The Washington County Heroin Task Force and the Ozaukee Substance Use Task Force were formed in response to an increase in opiate and heroin use in both counties. The long-term goal of these groups is to maintain the highest quality of life through the elimination of opioid abuse, achieved by community partnerships focused on prevention, policy, education, enforcement and treatment.

Both groups consist of community participation and partnerships with many agencies across the counties including law enforcement, schools, elected officials, businesses, county departments, and volunteers. The Ozaukee Substance Use Task Force is led by the Washington Ozaukee Public Health Department. The Washington County Heroin Task Force is led in conjunction with community partner, Elevate (non-profit AODA agency). Beginning in January 2023, these two separate task forces have voted to join forces as one shared Washington Ozaukee Substance Use Coalition.

2022 Outcomes:

- Spring and Fall Drug Take Back Day Events in both counties
- Fourteen permanent medication collection sites
- Coordination of Ozaukee Criminal Justice Coordinating Council
- NARCAN Direct Program
- Candlelight Vigils
- Substance Use Jail Survey Complete
- Ozaukee County redesigned Substance Use Toolkit
- Voted to combine Ozaukee Substance Use Task Force and Washington County Heroin Task Force

April 2022 Drug Take Back Day

184 Cars

Ozaukee County
Substances: 209 lbs

Washington County
Substances: 198 lbs

Concordia University
Substances: 515 lbs

October 2022 Drug Take Back Day

127 Cars

Ozaukee County
Substances: 158 lbs

Washington County
Substances: 44 lbs

Concordia University
Substances: 514 lbs

Child Death Review Team

Child Death Review teams (CDRT) meet to review and discuss circumstances involved in child deaths in both counties. The role of CDR is to determine how the death could have been prevented and if families and close contacts are offered appropriate support and resources. CDR teams provide recommendations for interventions and strategies to prevent future child death. The Washington and Ozaukee Child Death Review Teams met once in 2021 to revisit the structure, partnership and purpose of child death review. This meeting was foundational to the continuation of this work. In 2022, WOPHD merged the two counties into one shared multi-agency, multi-disciplinary Washington Ozaukee Child Death Review Team, including representatives from both counties. The newly merged CDRT met twice in 2022.

Change the Ending Campaign

In July 2022, the Washington County Department of Health & Human Services began a new mental health and substance use campaign to increase awareness of available resources. The “Change the Ending” campaign was developed by Human Services and Public Health staff to help those who are suffering from mental health or addiction and their loved ones to find treatment options in Washington County. This campaign includes advertisements, social media postings and a website dedicated to helping individuals connect with resources. By the end of 2022, over 200,000 individuals were reached through online postings, which linked over 6,000 individuals to the Change the Ending website. WOPHD plans to extend this campaign into 2023 and expand into Ozaukee County.

Essential Service 5

Create, champion, and implement policies, plans, and laws that impact health

Essential service 5 refers to provision of leadership for systemic community and state level planning for health improvement, development and tracking of measurable health objectives as part of a continuous quality improvement strategy and development of codes, regulations and legislation to guide the practice of public health.

WOPHD completed the 2021 Community Health Assessment and Community Health Improvement Planning Process with local partners and health care systems. The data gathered as part of this process was finalized and published in 2022 for community consumption as two separate reports, one for each county. These reports can be found in Appendices B and C.

This year, WOPHD also finalized our 2022-2025 Community Health Improvement Plan (CHIP). This CHIP is the first joint plan for our two neighboring counties. Following the CHNA process completed in conjunction with local hospital systems, WOPHD led a series of community meetings with key stakeholders to identify top health needs in our counties in 2021, followed by more stakeholder meetings to further prioritize these focus areas. In 2022, our department identified *mental health*, *substance use*, and *sexual health and wellness* as the top three priority health areas for both Washington and Ozaukee Counties. Because health issues often cross jurisdictional boundaries and the top three health priorities for Washington and Ozaukee Counties were identical, our 2022-2025 Community Health Improvement Plan is written to address these three priority areas as one merged department, sharing goals for improving the health of our communities across county lines. This newly merged CHIP also lays the foundation and groundwork for merging our separate Washington and Ozaukee County coalitions, to better address the needs of our communities with one merged coalition for each priority area beginning in 2023. The Community Health Improvement Plan for 2022-2025 can be found in Appendix D.

Essential Service 6

Utilize legal and regulatory actions designed to improve and protect the public's health

Essential service 6 refers to protection of drinking and recreational water supplies, enforcement of clean air standards, food safety and licensing and timely follow-up of environmental health concerns.

Beach Monitoring Program

WOPHD monitors the public beaches in both counties through a grant from the Wisconsin DNR. Public beach water is monitored from Memorial Day through Labor Day for elevated E. Coli levels and adverse

conditions. After monitoring, WOPHD uses E. Coli levels to determine beach advisories and closures, which are posted through signage and online. WOPHD also uses a Twitter account to post results: @OzaukeeBeach.

2022 Outcomes

- 10 Beach closures occurred due to bacteria exceedance, with 13 advisory days

DNR Well Water Program

WOPHD inspects and tests transient wells in Washington, Ozaukee and Milwaukee Counties through a grant from the Wisconsin Department of Natural Resources. The program requires an annual test for bacteria and nitrate for any well that has public access to water for at least 25 individuals per day for at least 60 days of the year.

2022 Outcomes

- 429 establishments completed water testing
- 88 well system sanitary survey inspections were conducted

Food and Recreational Safety Program

WOPHD is an agent for the Wisconsin Department of Agriculture, Trade and Consumer Protection (DATCP) and the Department of Safety and Professional Services (DSPA) in Washington County. WOPHD provides inspections, consultation and licensing services for: Restaurants and Retail Food; Public Swimming Pools and Water Attractions; Hotels, Motels, Tourist Rooming Houses and Bed and Breakfasts; Tattoo and Body Piercing; and Campgrounds and Recreational/Education Campgrounds.

2022 Outcomes

- 1209 routine licensing inspections were completed
- 132 pre-inspections were completed
- 154 follow-up inspections were completed

Essential Service 7

Assure an effective system that enables equitable access to the individual services and care needed to be healthy

Essential service 7 assures effective entry for disadvantaged people to a coordinated system of care, linkage of services for special population groups, and technical assistance for effective worksite health promotion/disease prevention programs.

WIC Referrals

Women and families are referred to additional community resources based on their needs. In 2021 a Maternal and Child Health services tool was developed to assist with the WIC Referral process. The tool included fluoride, immunizations, lead concerns, car seats, breastfeeding, home safety, child development, mental health, substance use, smoking cessation and more.

2022 Outcomes

- 596 women or families were referred to additional resources
- 180 families attended the Summer Community Connection Markets in both Washington Ozaukee counties
- >65 families attended Winter Ozaukee County Toy drive where WIC and MCH provided resources and education during event

Community Connections

In 2022, MCH hosted our second annual Community Connections Market which invited WIC families and community families with young children in need to attend a drive through resource fair. This event provided an opportunity for distribution of farmer's market vouchers to families participating in WIC, as well as connecting families to other resources in our counties. In addition to WIC, other WOPHD staff were also in attendance to provide education on car seat safety, hand out baby supplies, and distribute Narcan to families who were interested.

22% of Washington County WIC families attended

25% of Ozaukee County WIC families attended

Washington County

Vendors: Early Head Start, Community Smiles, UW Extension, Kettle Moraine YMCA, WOPHD
WIC families in attendance: 121
Narcan distributed by WOPHD: 4

Ozaukee County

Vendors: Family Sharing, Community Smiles Dental, Ozaukee Family Services, WOPHD
WIC families in attendance: 59
Narcan distributed by WOPHD: 12

Women, Infant, and Children (WIC) Nutrition Program

The Women Infant and Children program (WIC) promotes and maintains the health and well-being of nutritionally at-risk pregnant, breastfeeding and postpartum women, infants and children. WIC provides supplemental nutritious foods, nutrition and breastfeeding information and referral to other health and nutrition services. Due to the Covid-19 waivers that remain in place, most of 2022 WIC appointments were completed over the phone and referral data for height, weight, hemoglobin, and lead level were used for nutrition assessment. Furthermore, blood lead screenings were not performed in office 2022 and participants were encouraged to be screened for lead at their local health providers.

2022 Outcomes

- 1,892 participants were served by WIC in both counties
- \$1,354,925.93 worth of WIC benefits were redeemed at local vendors in both counties

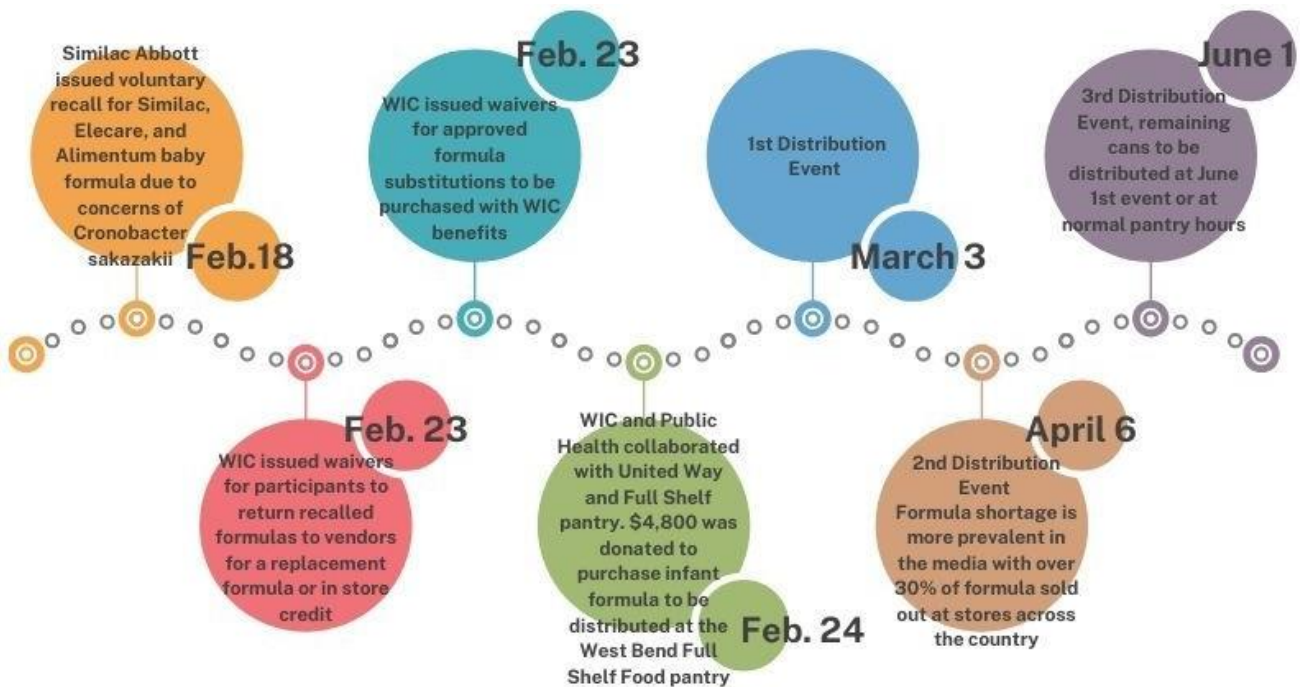
2022 Formula Crisis

In February of 2022, Similar Abbott issued a voluntary recall for Similac, Elecare and Alimentum baby formula. Later that month, WIC issued waivers for participants to return recalled formulas to vendors for a replacement formula or in store credit, along with waivers for approved formula substitutions to be purchased with WIC benefits. As participants began to find it increasingly more difficult to find formula on store shelves, Washington Ozaukee WIC and Public Health collaborated with United Way and Full Shelf Food Pantry in Washington County. \$4,800 was donated by United Way to purchase infant formula, which was distributed at the West Bend Full Shelf Food Pantry beginning in March by health department staff. In total, WIC staff organized three distribution events between March and June.

190 cans of formula were distributed by the end of May

95 babies were fed

228 cans of formula were purchased with additional funds



Wisconsin Well Woman Program (WWWP)

WWWP provides preventive screening services for breast and cervical cancer to low income, uninsured or underinsured women residing in Wisconsin. Women screened and diagnosed with breast or cervical cancer may be eligible for Wisconsin Well Woman Medical Assistance (WWMA) for treatment.

2022 Outcomes

- 12 women participated in WWWP in Washington and Ozaukee Counties

Essential Service 8

Build and support a diverse and skilled public health workforce

Essential service 8 assures education and training of personnel to meet the needs for public and personal health service; adoption of continuous quality improvement and life-long learning; and active partnership with academic institutions. In order to provide the highest quality public health service, WOPHD strives to ensure that all of our staff possesses the knowledge, skills and abilities to perform their jobs effectively and efficiently.

Linkages with Academia

WOPHD has strong linkages with numerous institutions of higher education and serves as a site for student placement, observation, practice experience and internship.

2022 Outcomes

- WOPHD hosted one student intern in 2022
- WOPHD is represented on the Concordia University School of Nursing Advisory Board
- WOPHD hosted undergraduate nursing students for the spring and fall semester from University of Wisconsin Milwaukee for their community health course.
- Concordia University partnered on a number of COVID-19 related efforts including testing and vaccination

Essential Service 9

Improve and innovate public health functions through ongoing evaluation, research, and continuous quality improvement

Essential service 9 refers to ongoing evaluation of health programs to assess program effectiveness and to provide information necessary for allocating resources and shaping programs. Each WOPHD program area will continue to be evaluated as we navigate away from the COVID-19 pandemic and continue to rebuild public health services.

Health and Family Services (HFS) 140 Review

The Wisconsin Department of Health Services is required to formally review the operations of all Wisconsin Local Health Departments every five years. The review establishes the health department as a level I, II, or III agency. A level I agency meets the minimum requirements and a level III meets the maximum requirements established for local health departments. As a newly merged department, WOPHD underwent a 140 Review and achieved a level III designation in the summer of 2018.

Strategic Planning

As a further result of the COVID-19 pandemic, WOPHD is past due for a new strategic plan. In the fall of 2022, WOPHD staff began working with a public health consultant through a series of planning sessions to review current community health data, review programs and services currently provided by our department, and reflect upon the shifts that have occurred in public health and within our own department in the past two years. Department staff worked together to complete an environmental scan/situational awareness activity, identify a shared vision and set a new strategic direction to carry our department through the next several years. This plan will be finalized and implemented in early 2023, giving our staff a new purpose, mission and philosophy that identifies the values that we as a department hold in fulfilling our purpose and carrying out our mission.

Essential Service 10

Build and maintain a strong organizational infrastructure for public health

Essential Service 10 includes developing an understanding of the broader organizational infrastructures and roles that support the public health system in a jurisdiction, or in our case a multi-jurisdictional partnership. Essential service 10 also ensures that communications and strategic planning capabilities are employed by effective and ethical leadership, information technology services are current, and finances are managed effectively.

WOPHD functioned under the leadership of two Interim Health Officers in 2021 and experienced many difficult changes in leadership across the department's management team, as well as other staffing challenges. In 2022, we finally have permanent leadership in place. As the pandemic showed many organizations the importance of succession planning, our department also added a new position for Deputy Director this year, who is now able to step in to lead the department through emergencies in the absence of the Director/Health Officer.

Innovative Partnerships & Awards

2022—Outcomes

- The health department was honored to receive a certificate of commendation from Governor Evers for our commitment and devotion to the prevention of illness, promotion of health, and protection of residents in our counties throughout the past two years.

Appendices

Appendix A

[Sexual Wellness in Washington and Ozaukee Counties](#)

Appendix B

[Ozaukee County Community Health Survey Report](#)

Appendix C

[Washington County Community Health Survey Report](#)

Appendix D

[Washington Ozaukee Community Health Improvement Plan 2022-2025](#)